

## SEA CONTAINER SPECIFICATIONS

### DRY CARGO CONTAINERS



#### ● DIMENSIONS

| Type  | Container Weight |           |          | Interior Measurement |           |            |                            | Door Open |            |
|-------|------------------|-----------|----------|----------------------|-----------|------------|----------------------------|-----------|------------|
|       | Gross (kg)       | Tare (kg) | Net (kg) | Length (m)           | Width (m) | Height (m) | Capacity (m <sup>3</sup> ) | Width (m) | Height (m) |
| 20 ft | 24,000           | 2,370     | 21,630   | 5.898                | 2.352     | 2.394      | 33.20                      | 2.343     | 2.280      |
| 40 ft | 30,480           | 4,000     | 26,480   | 12.031               | 2.352     | 2.394      | 67.74                      | 2.343     | 2.280      |

#### ● CHARACTERISTICS

Manufactured from either Aluminium or steel, they are suitable for most types of cargo / general cargo. Aluminium containers have a slightly larger payload than steel, and steel containers have a slightly larger internal cube

### REFRIGERATED CONTAINERS



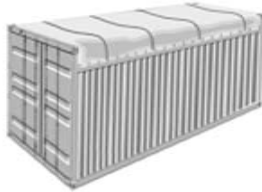
#### ● DIMENSIONS

| Type  | Container Weight |           |          | Interior Measurement |           |            |                            | Door Open |            |
|-------|------------------|-----------|----------|----------------------|-----------|------------|----------------------------|-----------|------------|
|       | Gross (kg)       | Tare (kg) | Net (kg) | Length (m)           | Width (m) | Height (m) | Capacity (m <sup>3</sup> ) | Width (m) | Height (m) |
| 20 ft | 24,000           | 3,050     | 20,950   | 5.449                | 2.290     | 2.244      | 26.70                      | 2.276     | 2.261      |
| 40 ft | 30,480           | 4,520     | 25,960   | 11.690               | 2.250     | 2.247      | 57.10                      | 2.280     | 2.205      |

#### ● CHARACTERISTICS

Recommended for delicate cargo. Bottom-air delivery system ensures refrigerated cargo reaches its destination in optimum condition.

### OPEN TOP CONTAINERS



#### ● DIMENSIONS

| Type  | Container Weight |           |          | Interior Measurement |           |            |                            | Door Open |            |
|-------|------------------|-----------|----------|----------------------|-----------|------------|----------------------------|-----------|------------|
|       | Gross (kg)       | Tare (kg) | Net (kg) | Length (m)           | Width (m) | Height (m) | Capacity (m <sup>3</sup> ) | Width (m) | Height (m) |
| 20 ft | 24,000           | 2,580     | 21,420   | 5.629                | 2.212     | 2.311      | 32.00                      | 2.330     | 2.263      |
| 40 ft | 30,480           | 4,290     | 26,190   | 11.763               | 2.212     | 2.311      | 65.40                      | 2.330     | 2.263      |

#### ● CHARACTERISTICS

Allowing cargo to be loaded from the top, open top containers are particularly suitable for bulky cargo such as machinery. They are fitted with a PVC tarpaulin cover and attachable bows with cable sealing devices. The container doors can be removed to make the stuffing of cargo more convenient. Manufactured from steel

### FLAT RACK CONTAINERS



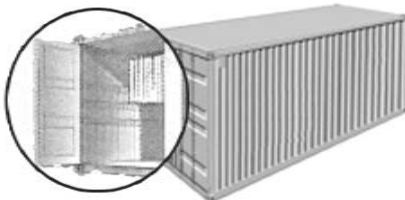
#### ● DIMENSIONS

| Type  | Container Weight |           |          | Interior Measurement |           |            |                            |
|-------|------------------|-----------|----------|----------------------|-----------|------------|----------------------------|
|       | Gross (kg)       | Tare (kg) | Net (kg) | Length (m)           | Width (m) | Height (m) | Capacity (m <sup>3</sup> ) |
| 20 ft | 30,480           | 2,900     | 27,580   | 5.624                | 2.236     | 2.234      | 27.90                      |
| 40 ft | 34,000           | 5,870     | 28,130   | 11.786               | 2.236     | 1.968      | 51.90                      |

#### ● CHARACTERISTICS

Flatracks are especially suited to heavy loads or cargo that needs loading from the top or sides, such as pipes and machinery. There are collapsible and non-collapsible containers with or without walls. Manufactured from steel.

### GARMENT CONTAINERS



#### ● DIMENSIONS

| Type  | Container Weight |           |          | Interior Measurement |           |            |                            | Door Open |            |
|-------|------------------|-----------|----------|----------------------|-----------|------------|----------------------------|-----------|------------|
|       | Gross (kg)       | Tare (kg) | Net (kg) | Length (m)           | Width (m) | Height (m) | Capacity (m <sup>3</sup> ) | Width (m) | Height (m) |
| 20 ft | 24,000           | 2,240     | 21,760   | 5.898                | 2.352     | 2.394      | 33.20                      | 2.343     | 2.280      |
| 40 ft | 30,480           | 3,885     | 26,595   | 12.031               | 2.352     | 2.394      | 67.74                      | 2.343     | 2.280      |

#### ● CHARACTERISTICS

Use for all kinds of garment. The containers are specially designed for garment product and related industry. There are some options of using a string or bar system or a combination of both. The containers allow increased flexibility, greater load Internal Capacity and savings on transportation and handling cost.

### HIGH CUBE CONTAINERS



#### ● DIMENSIONS

| Type  | Container Weight |           |          | Interior Measurement |           |            |                            | Door Open |            |
|-------|------------------|-----------|----------|----------------------|-----------|------------|----------------------------|-----------|------------|
|       | Gross (kg)       | Tare (kg) | Net (kg) | Length (m)           | Width (m) | Height (m) | Capacity (m <sup>3</sup> ) | Width (m) | Height (m) |
| 40 ft | 30,480           | 3,980     | 26,500   | 12.031               | 2.352     | 2.698      | 76.30                      | 2.340     | 2.585      |
| 45 ft | 30,480           | 4,800     | 25,680   | 13.544               | 2.352     | 2.698      | 86.00                      | 2.340     | 2.585      |

#### ● CHARACTERISTICS

With high cube containers, you gain an extra foot in height compared with general-purpose containers. Ideal for light, voluminous cargo or bulky cargo. These extra volume containers come in steel and aluminium.